



**ZIMBABWE SCHOOL EXAMINATIONS COUNCIL**  
**General Certificate of Education Ordinary Level**

**MUSICAL ARTS**

**4062/1**

PAPER 1 Multiple Choice

**SPECIMEN PAPER**

1 hour

Additional materials:

- Multiple Choice Answer Sheet
- Soft pencil (type B or HB is recommended)
- Soft clean eraser

**TIME** 1 hour

**INSTRUCTIONS TO CANDIDATES**

**Do not open this booklet until you are told to do so.**

Write your name, Centre number and candidate number on the answer sheet in the spaces provided, unless this has already been done for you.

There are **forty** questions in this paper. Answer **all** questions. For each question, there are four possible answers, **A, B, C** and **D**. Choose the **one** you consider correct and record your choice in soft pencil on the separate answer sheet.

**Read very carefully the instructions on the answer sheet.**

**INFORMATION FOR CANDIDATES**





Each correct answer will score one mark.

A mark will **not** be deducted for a wrong answer

---

**This specimen paper consists of 10 printed pages and 2 blank pages.**

Copyright: Zimbabwe School Examinations Council, Specimen Paper.

- 1** In music notation, the 5 lines and 4 spaces that represent a different musical pitch are called the
- A** ledger lines.
  - B** bar lines.
  - C** staff.
  - D** clef.
- 2** The other name for F clef is \_\_\_\_\_ clef.
- A** alto
  - B** bass
  - C** tenor
  - D** treble
- 3** Silences in music are called
- A** pulls.
  - B** rests.
  - C** slurs.
  - D** ties.
- 4** On the given notes a \_\_\_\_\_ has the longest value.
- A.** 
  - B.** 
  - C.** 
  - D.** 
- 5** The bottom number in a time signature shows the \_\_\_\_\_ of beats in a bar.
- A** number
  - B** quality
  - C** tempo
  - D** type
- 6** In the scale of G major, which note is sharpened?
- A** D
  - B** E
  - C** F
  - D** G

- 7 Changing of keys within the same piece of music is
- A transcription.
  - B improvisation.
  - C modification.
  - D modulation.
- 8 Which of the following is a migrant Zimbabwean cultural musical art?
- A Dinhe
  - B Mhande
  - C Ngororombe
  - D Nyau
- 9 Mbakumba drumming pattern is produced by how many tones?
- A 1
  - B 2
  - C 3
  - D 4
- 10 Mbira Nyungwenyungwe has how many notes within an Octave?
- A 15
  - B 8
  - C 7
  - D 6
- 11 The dance pattern 1;2 | 1;2;3;4 | 1;2;3 | is for
- A Jerusarema.
  - B Mbakumba.
  - C Mhande.
  - D Ngororombe.
- 12 The texture of African music is generally described as
- A homophonic.
  - B monophonic.
  - C monorhythmic.
  - D polyphonic.

- 13 The musician known as the Chimurenga legend in Zimbabwe is
- A Chinx Chingaira.
  - B Oliver Mtukudzi.
  - C Clive Malunga.
  - D Thomas Mapfumo.
- 14 Lovemore Majaivhana's music has elements of
- A Kanindo and kwela.
  - B Mbaqanga and kwela.
  - C Mbaqanga and rhumba.
  - D Rhumba and kwela.
- 15 Which of the following music genres is a hybrid of Congolese, Kenyan, Zambian and Malawian music?
- A Kanindo
  - B Mbaqanga
  - C Rhumba
  - D Sungura
- 16 The following are popular mbira musicians **except**
- A Dumisani Maraire.
  - B Ephat Mujuru.
  - C Bob Nyabinde.
  - D Thomas Mapfumo.
- 17 A person who deals with the day to day running of a band's non-musical issues is a
- A band leader.
  - B band manager.
  - C music producer.
  - D music engineer.

- 18 Live streaming refers to the distribution of music through
- A the internet.
  - B live shows.
  - C the radio.
  - D the television.
- 19 The Sound Pressure Level (SPL) is measured in
- A ambience.
  - B amplitude.
  - C decibel.
  - D frequency.
- 20 Which of the following is **not true** about headphones use when recording?
- A The tone quality is similar in different environments.
  - B It is easy to hear small changes in the mix
  - C It is easy to judge the stereo spread
  - D They become uncomfortable after long listening sessions
- 21 Who owns the music performance rights?
- A Composer
  - B Distributor
  - C Producer
  - D Session musician
- 22 One of the most famous Baroque Composers is
- A Johann Sebastian Bach.
  - B Joseph Haydn.
  - C Ludwig van Beethoven.
  - D Wolfgang Amadeus Mozart.
- 23 Which of the following brass instruments produces the lowest pitch?
- A Trombone
  - B Trumpet
  - C Horn
  - D Tuba

24 Gregorian chants are a music genre of the \_\_\_\_\_ period.

- A Renaissance
- B Medieval
- C Classical
- D Baroque

25 Which of the following is the **odd** one out?

- A. #
- B.  $\flat$
- C.  $\natural$
- D.  $\sharp$

26 The relative minor scale for G major is \_\_\_\_\_ minor.

- A A
- B D
- C E
- D G

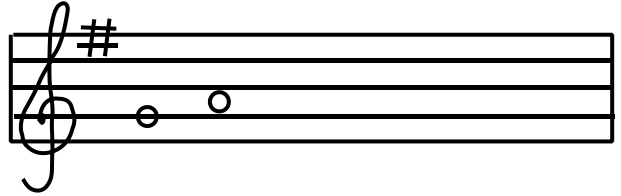
27 Which of the following is a compound duple time signature?

- A  $\frac{12}{8}$
- B  $\frac{3}{4}$
- C  $\frac{6}{8}$
- D  $\frac{2}{4}$

28 A minim has \_\_\_\_\_ crotchet beats.

- A 2
- B 3
- C 4
- D 5

29 What is the interval between the given notes?

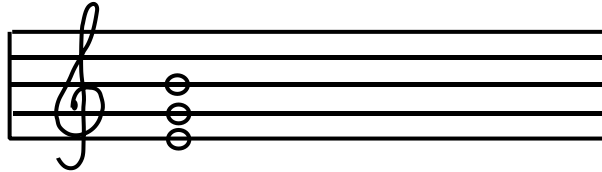


- A Minor 2<sup>nd</sup>
- B Major 2<sup>nd</sup>
- C Major 3<sup>rd</sup>
- D Minor 3<sup>rd</sup>

30 Which of the following **does not** reduce feedback?

- A Placing microphones close to desired sound source
- B Placing microphones far from speakers
- C Using minimum number of microphones
- D Using microphones with pop filters

31 Below is the \_\_\_\_\_ triad in C major.

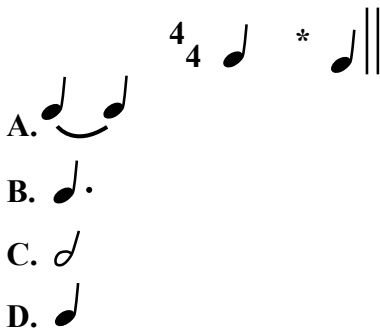


- A dominant
- B mediant
- C subdominant
- D tonic

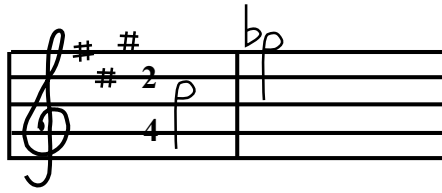
32 The interval arrangement of a natural minor scale is

- A 2122122
- B 2212221
- C 2222222
- D 2221221

33 Below is an incomplete bar. Which note can be added to complete the bar?

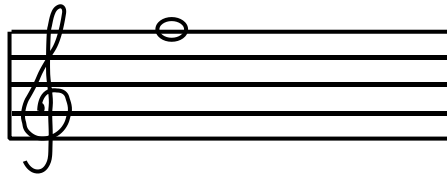


- 34 In tonic solfa, the notes shown in the staff are \_\_\_\_\_.



- A. | m : — | ta : — ||  
 B. | m : — | t : — ||  
 C. | ma : — | t : — ||  
 D. | ma : — | ta : — ||

- 35 The note below is key number \_\_\_\_\_ on the nyunganyunga mbira.



- A 2  
 B 4  
 C 6  
 D 8

- 36 Which rhythm best represents the tonic solfa notation below?

s : m | — r : d | s : l · f | l : — ||

- A  $\frac{2}{4}$    
 B  $\frac{2}{4}$    
 C  $\frac{2}{4}$    
 D  $\frac{2}{4}$

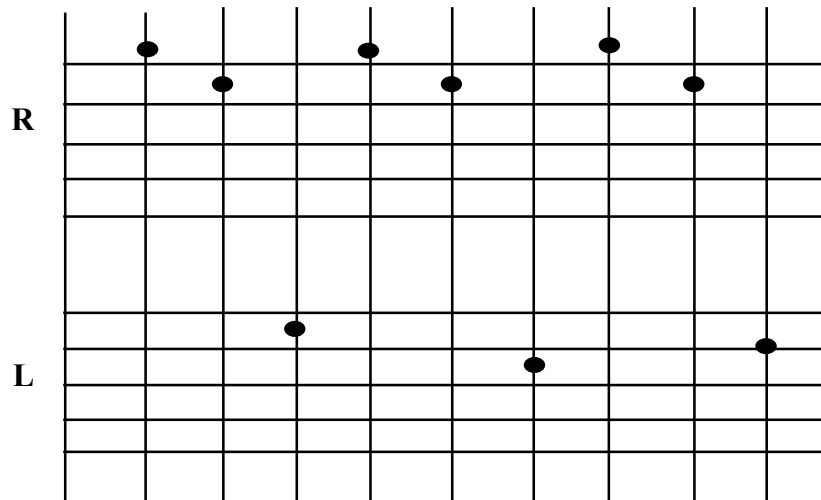


- 37 The drum pattern below is for \_\_\_\_\_.



- A Chinyambura
- B Mbakumba
- C Mbende
- D Mhande

- 38 How many Es are in the tablature notation below?



- A 1
- B 3
- C 4
- D 5

- 39 How many bars are created if the following rhythm is re-written in  $\frac{3}{4}$ ?



- A 3
- B 4
- C 5
- D 6

40 Which of the rhythms below is exclusively ternary?



**BLANK PAGE**

**BLANK PAGE**